

Tips for printing and laminating the house and furniture.

When you print, if you print on 120 gram paper [called cardstock in N. America], you will get a good sturdy quality. In Thailand, one learner found paper that was the weight of N. American posterboard, but shiny on both sides that worked well.

There is a bed, a chair, a house, a table, and a lamp that hangs from the ceiling.

The house has three sides, one plain, one with a door, and one with windows.

Cut on the solid lines, fold on the dotted lines.

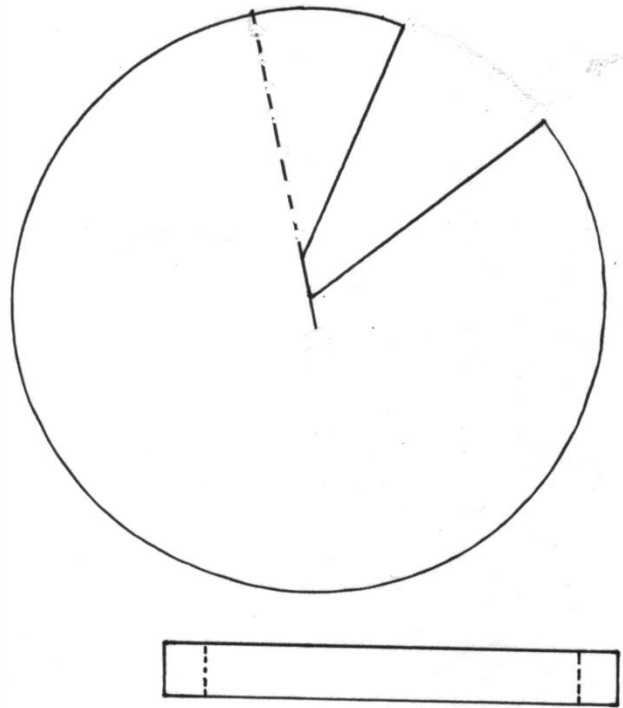
Before laminating, cut on the solid lines, and FOLD all the dotted lines. It is important to pre-fold before laminating as once you laminate, it is hard to get it to fold at the right place, but if you pre-fold before laminating, it works okay.

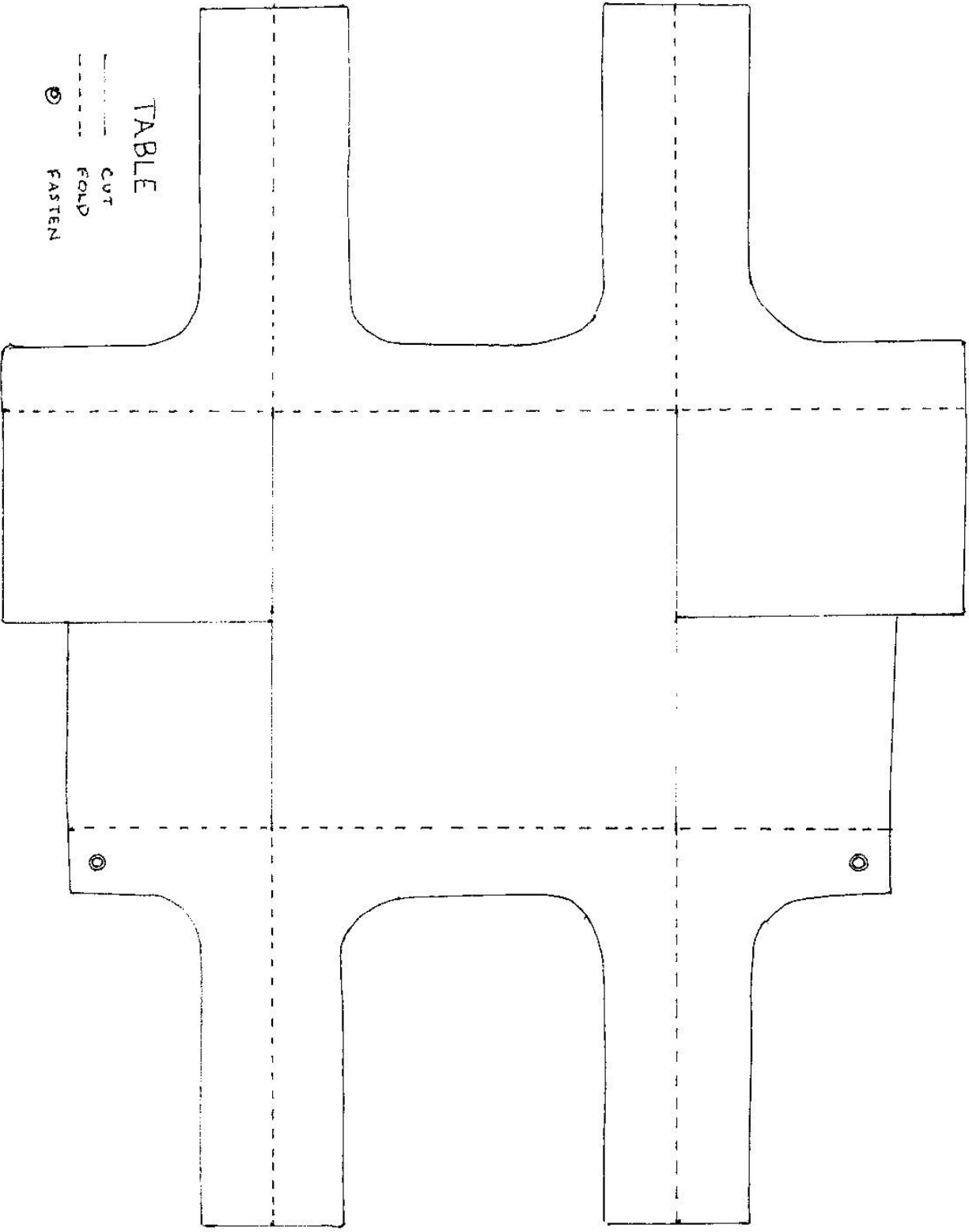
[I FORGOT TO PRE-FOLD :-0]

Don't panic! If you take a cutter & make tiny 3 mm incisions along the dotted lines about 3/4 cm apart, then try to fold, that makes the fold work at the designated place

These patterns and instructions are from Angela Thomson growingparticipator.com.

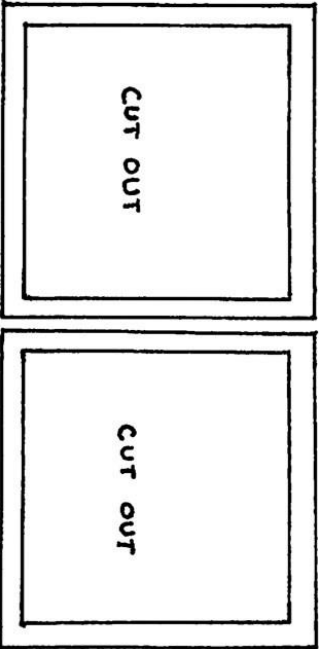
ceiling light/lamp →
tape to ceiling, hangs down from the thin rectangle

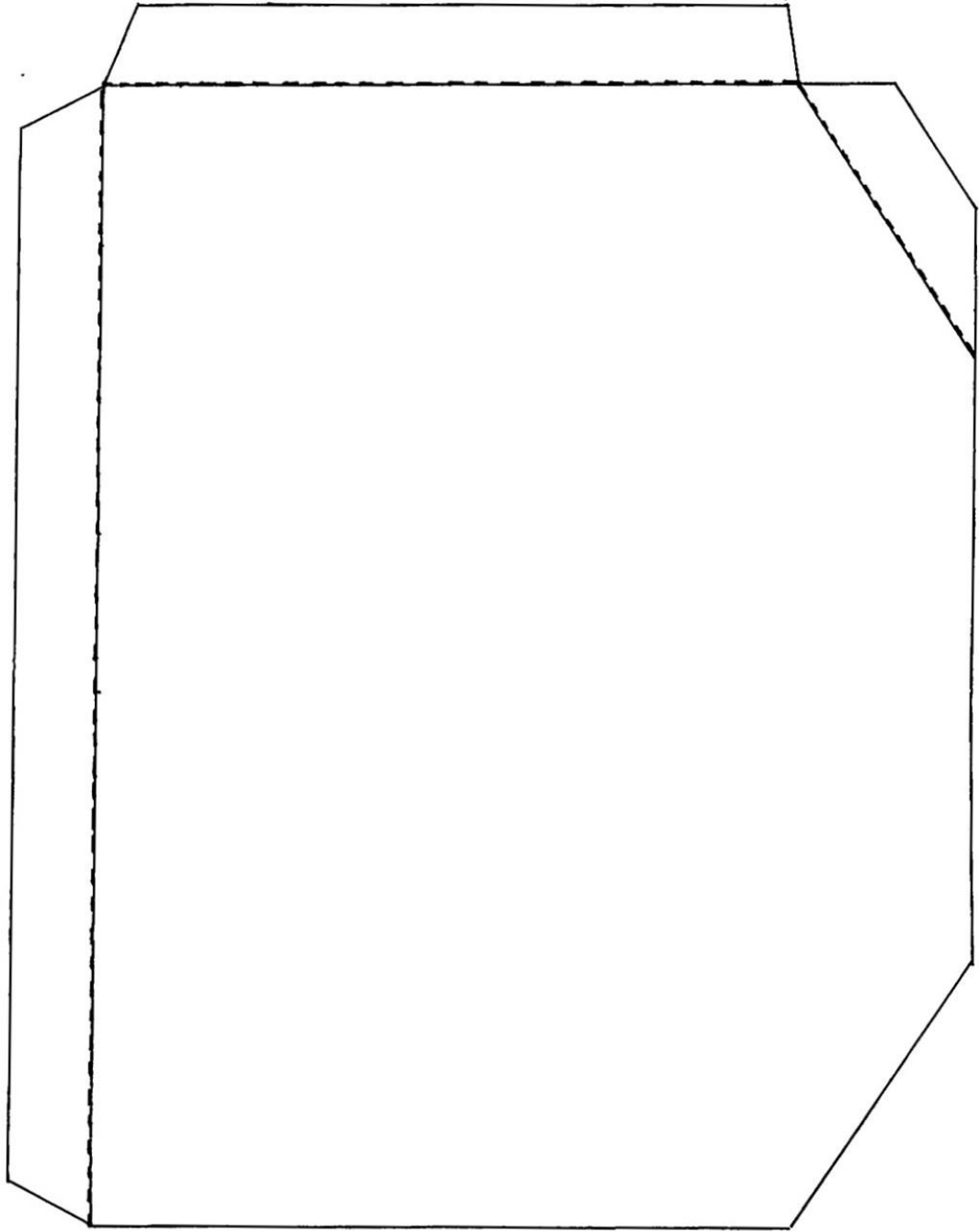


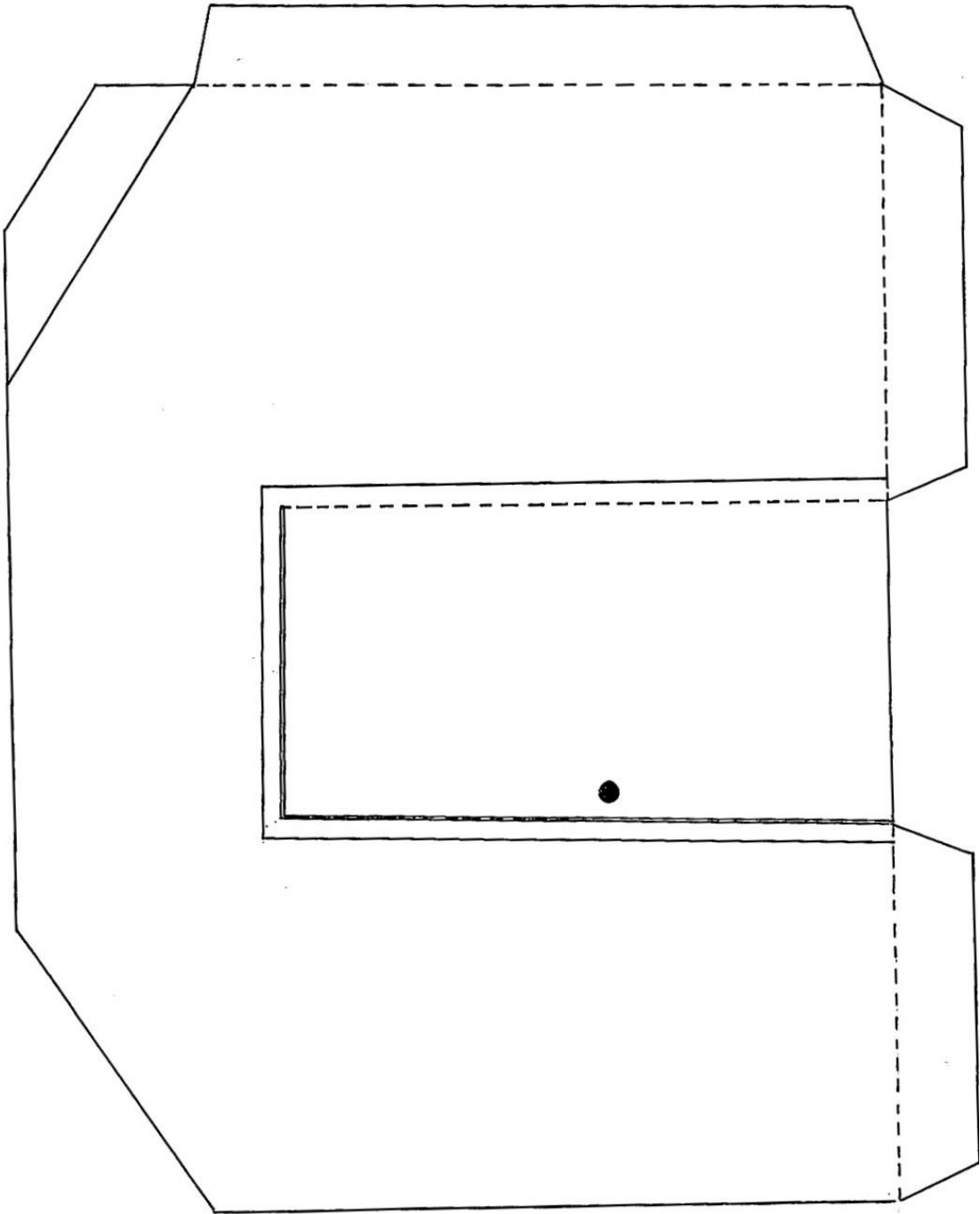


TABLE

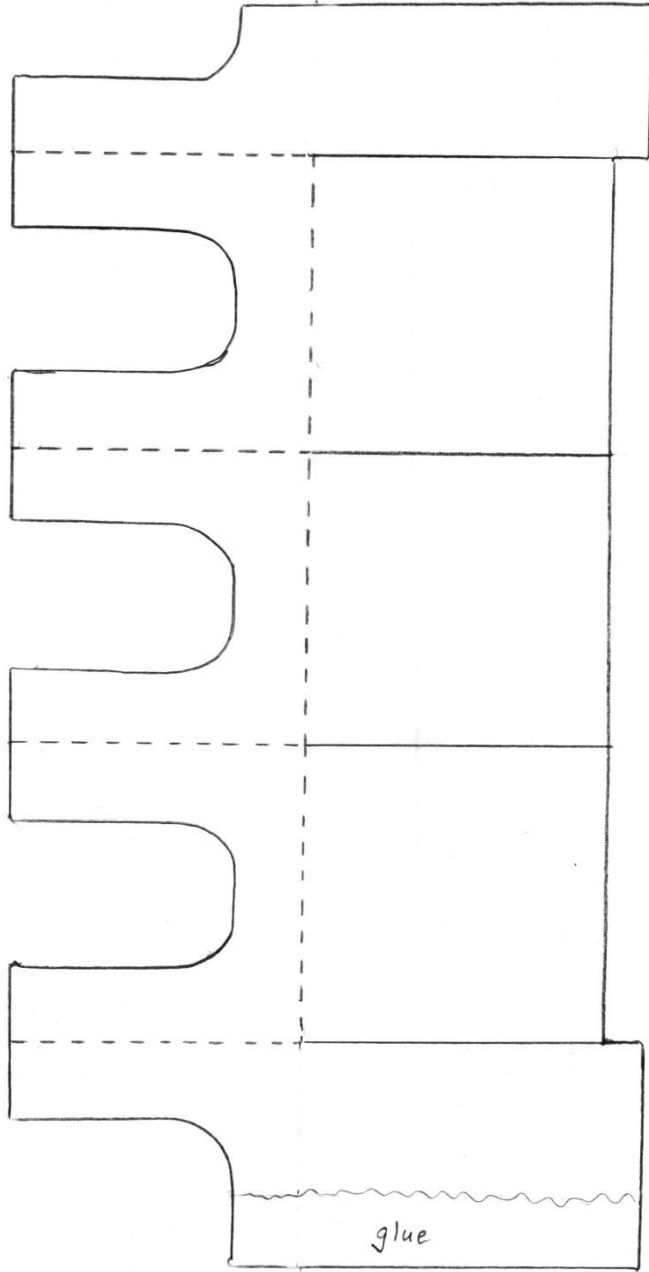
- - - - - CUT
- - - - - FOLD
- ⊙ FASTEN

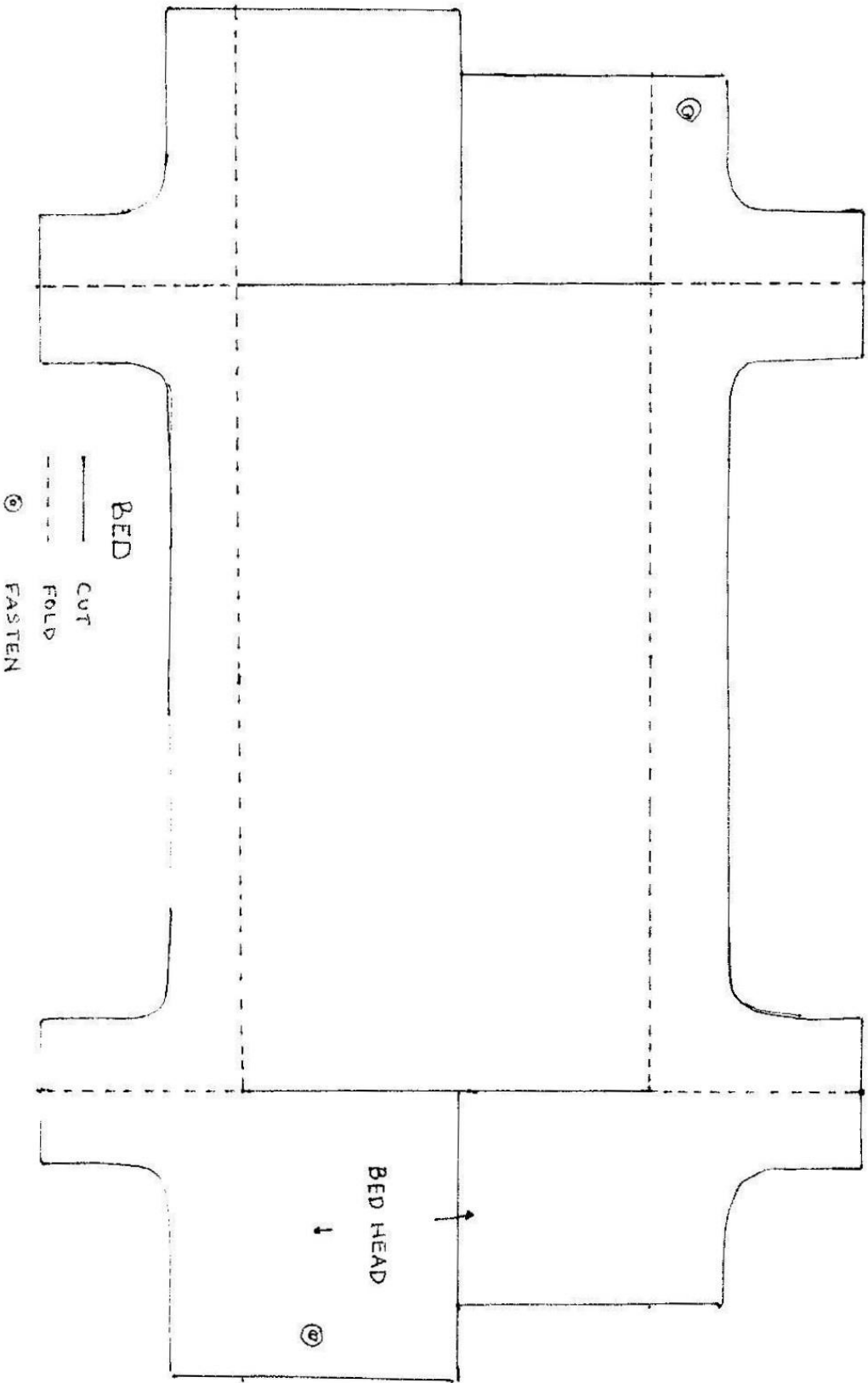






Chair -
—— cut
----- fold





BED

— CUT

- · - FOLD

⊙ FASTEN

BED HEAD

